



POWER EQUIPMENT CORPORATION

**AFM-25**  
PART # DPEC000409  
DATE: 12-07-11  
REVISED: 02-24-16

**31-482**

**6 IN. X 89 IN. EDGE SANDER**

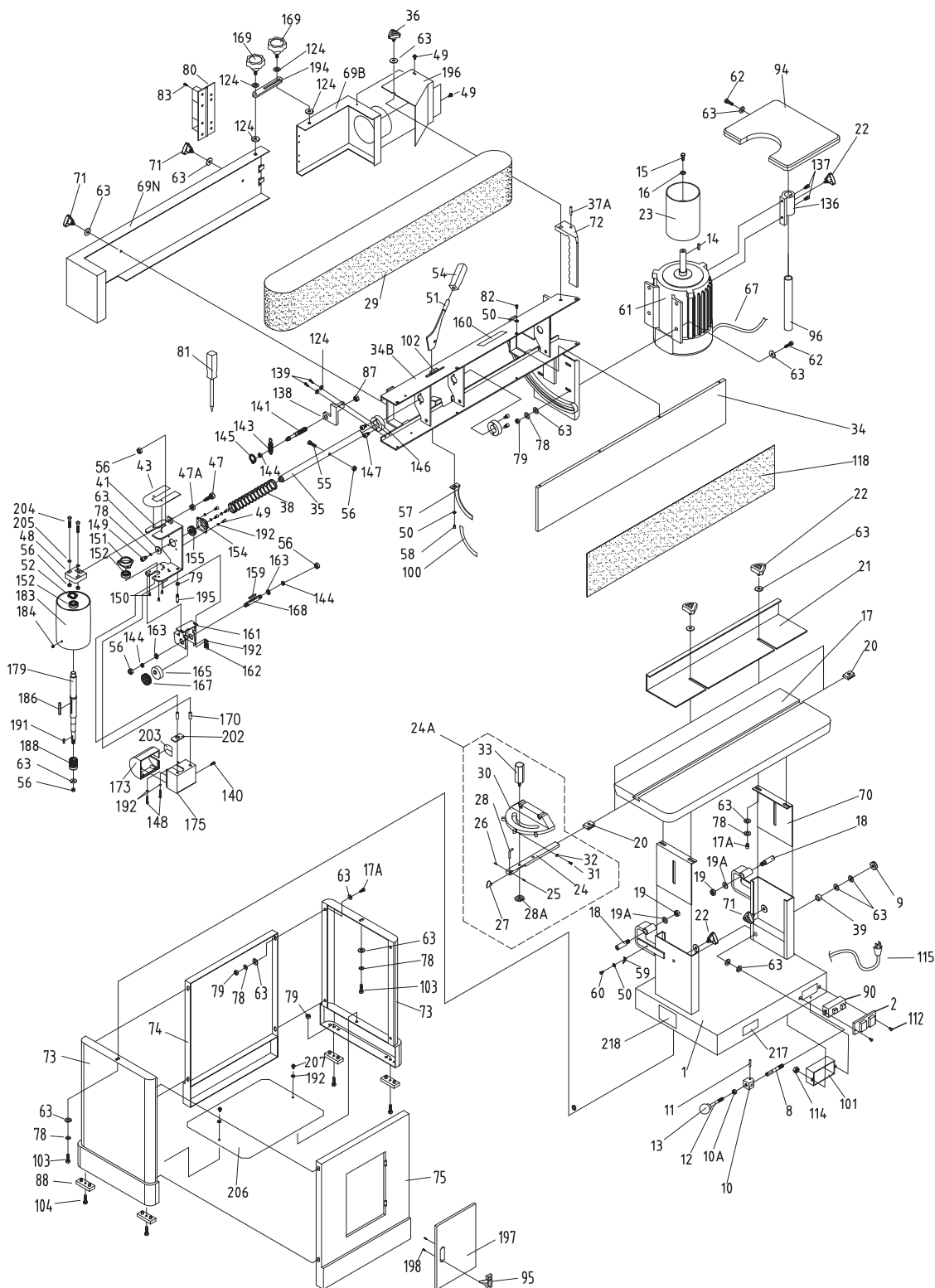


ILLUSTRATION 1

## REPLACEMENT PARTS

NO.	DELTA PART #	DESCRIPTION	QTY	NO.	DELTA PART #	DESCRIPTION	QTY
1	DPEC000775	CABINET	1	39	DPEC000814	PARTITION RING	1
2	DPEC000776	SWITCH COVER	1	41	DPEC000815	DRIVEN ROLLER FRAME	1
8	DPEC000777	LONG SCREW	1	43	DPEC000816	DRIVEN ROLLER PLATE	1
9	DPEC000778	* LOCK NUT 3/8"-24UNC	1	47	DPEC000817	ADJUST SCREW	1
10	DPEC000779	CAM ECCENTRIC	1	47A	DPEC000818	ADJUST NUT	1
10A	DPEC000780	* HEX.NUT 3/8"-16UNC	1	48	DPEC000819	ADJUST PAD	1
11	DPEC000781	PIN 5 X 25	1	49	DPEC000820	* PHILIP HD SCR. 3/16" X 24UNC X 1/4"	8
12	DPEC000782	LOCK HANDLE 3/8"-16UNC	1	50	DPEC000821	GEAR WASHER 3/16"	10
13	DPEC000783	HAND KNOB	1	51	DPEC000822	BELT TENSION LEVER	1
14	DPEC000784	* KEY 5 X 5 X 25	1	52	DPEC000823	WEAVE SPACER BWW-6202	1
15	DPEC000785	* HD.HEX.SCR. 1/4" X 20UNC X 1"	1	54	DPEC000824	TENSION LEVER HANDLE	1
16	DPEC000786	* FLAT WASHER 1/4" X 23	1	55	DPEC000825	* HD.HEX.SCR. 5/16" X 18UNC X 1-3/4"L	1
17	DPEC000787	TABLE	1	56	DPEC000826	* NYLON NUT 5/16"-18UNC	6
17A	DPEC000788	* CAP SCR.5/16" X 18UNC X 5/8"	4	57	DPEC000827	TILT SCALE	1
18	DPEC000789	SPECIAL SCR.	2	58	DPEC000828	* FLAT HD.SCR. 3/16 X 3/4	1
19	DPEC000790	* NUT M10	2	59	DPEC000829	WIDTH POINTER	1
19A	DPEC000791	* SPRING WASHER 3/8"	2	60	DPEC000830	* FLAT HD.SCR. 3/16" X 24UNC X 3/8"	1
20	DPEC000792	GUIDE BLOCK	2	61	DPEC000831	MOTOR 1-1/2HP	1
21	DPEC000793	FENCE	1	62	DPEC000832	* HD.HEX.SCR 5/16" X 18UNC X 1-1/4"L	5
22	DPEC000794	KNOB BOLT 8 X 12	4	63	DPEC000833	* FLAT WASHER 5/16" X 18 X 2T	41
23	DPEC000795	DRIVE ROLLER	1	67	DPEC000834	POWER CORD	1
24A	DPEC000796	MITER GAGE	1	69B	DPEC000835	BELT COVER	1
24	DPEC000797	GUIDE BAR	1	69N	DPEC000836	DUST COVER	1
25	DPEC000798	PIN 3 X 6	1	70	DPEC000837	LIFTING PLATE	2
26	DPEC000799	* SET SCR. 1/4" X 20UNC X 1/4"	1	71	DPEC000838	KNOB BOLT 8 X 20	3
27	DPEC000800	POSITION PLATE	1	72	DPEC000839	BRACKET	1
28	DPEC000801	POINTER	1	73	DPEC000840	STAND (RIGHT & RIGHT)	2
28A	DPEC000802	POSITION PLATE	1	74	DPEC000841	PARTITION BOARD	1
30	DPEC000803	MITER GAUGE BODY	1	75	DPEC000842	FRONT PARTITION	1
31	DPEC000804	* RD.HD.SCR. 5/32" X 32UNC X 1/2"	3	78	DPEC000843	SPRING WASHER 5/16"	19
32	DPEC000805	* HEX.NUT 5/32"-32UNC	3	79	DPEC000844	* HD.HEX.SCR 5/16"-18UNC	17
33	DPEC000806	HAND KNOB	1	80	DPEC000845	HINGE	1
29	DPEC000807	SANDING BELT	1	81	DPEC000846	DRIVER WRENCH	1
34	DPEC000808	PLATEN	1	82	DPEC000847	* FLAT HD.SCR. M5 X 0.8P X 12	8
34B	DPEC000809	PLATEN FRAME	1	83	DPEC000848	* FLAT HD.SCR. M4 X P0.7 X 20L	8
35	DPEC000810	TENSION SHAFT	1	87	DPEC000849	* LOCK NUT M14 X P2.0	1
36	DPEC000811	KNOB BOLT 8 X 35	1	88	DPEC000850	RUBBER FEET	4
37A	DPEC000812	PIN 6 X 40	1	90	DPEC000851	SWITCH	1
38	DPEC000813	SPRING 6 X 40	1	94	DPEC000852	EXTENSION TABLE	1

\* = Item is standard hardware and can be purchased in local hardware or home improvement stores.

NO.	DELTA PART #	DESCRIPTION	QTY	NO.	DELTA PART #	DESCRIPTION	QTY
95	DPEC000853	HANDLE	1	173	DPEC000893	DUST CHUTE (LEFT)	1
96	DPEC000854	SUPPORTING ROD	1	175	DPEC000894	DUST CHUTE (RIGHT)	1
100	DPEC000855	SCALE	1	179	DPEC000895	DRIVEN ROLLER ARBOR	1
101	DPEC000856	SWITCH BOX	1	183	DPEC000896	DRIVEN ROLLER	1
102	DPEC000857	LABEL	1	184	DPEC000897	* SOC.SET.SCR. 6 X 6	2
103	DPEC000858	* HEX. HD. SCREW 5/16" X 1-1/4"	2	186	DPEC000898	* KEY 5 X 5 X 40	1
104	DPEC000859	* PHILIP HD.SCR. 3/16" X 24UNC X 1/4"	4	188	DPEC000899	WORM	REF
112	DPEC000860	* RD. HD. SCREW 3/16" X 1-1/2"	2	191	DPEC000900	* KEY 4 X 4 X 25	1
114	DPEC000861	* NUT 3/16"	2	192	DPEC000282	* M5 LOCK WASHER	4
115	DPEC000862	SWITCH CORD	1	194	DPEC000901	JOIN PLATE	1
118	DPEC000863	GRAPHITE PAD	1	195	DPEC000902	ARBOR	1
124	DPEC000864	* FLAT WASHER 1/4"	10	196	DPEC000903	DUST COVER	1
136	DPEC000865	SUPPORTING BASE	1	197	DPEC000904	DOOR	1
137	DPEC000866	* CAP SCR. 3/16" X 24UNC X 3/8"	2	198	DPEC000905	* RD. HD. SCR. M4 X P0.7 X 6	2
138	DPEC000867	BRACKET	1	199	DPEC000906	OPERATION MANUAL	REF
139	DPEC000868	* CAP SCREW 1/4" X 3/4"	2	202	DPEC000907	SPONGE PAD	1
140	DPEC000869	SELF-TAPPING SCREW 1/8" X 1/4"	1	203	DPEC000442	SPONGE PLATE	1
141	DPEC000870	SHAFT	1	204	DPEC000443	* CAP SCREW 5/16" X 18UNC X 1-3/4"	2
143	DPEC000871	SPRING	1	205	DPEC000444	DISH SHAPE SPRING	2
144	DPEC000872	BEARING 698	3	206	DPEC000445	DECK	1
145	DPEC000873	C RING STW8	1	207	DPEC000446	* CAP SCR. 5 X 40	2
146	DPEC000874	FIXED LOOP	2	217	DPEC000447	ID LABEL	1
147	DPEC000875	* CAP SCR. M5 X 0.8P X 20L	4	218	DPEC000448	WARNING LABEL	1
148	DPEC000876	* CAP SCREW M5 X 0.8P X 30L	2				
149	DPEC000877	* HEX.HD.SCR. 5/16" X 18UNC X 1"	1				
150	DPEC000878	* FLAT HD.SCR. 4 X 12	3				
151	DPEC000879	BEARING BASE	1				
152	DPEC000880	BEARING 6202	2				
154	DPEC000881	BEARING COVER 6003	1				
155	DPEC000882	BEARING 6003	1				
159	DPEC000883	* KEY 4 X 4 X 30L	1				
160	DPEC000884	LABEL	1				
161	DPEC000885	FIXED BRACKET	1				
162	DPEC000886	CAP SCREW M5 X 0.8P X 10L	4				
163	DPEC000887	* BEARING BUSHING	2				
165	DPEC000888	CAM	1				
167	DPEC000889	WORM GEAR & WORM SCREW SET	1				
168	DPEC000890	WORM SHAFT	1				
169	DPEC000891	KNOB BOLT	2				
170	DPEC000892	SUPPORT COLUMN	2				

\* = Item is standard hardware and can be purchased in local hardware or home improvement stores.