



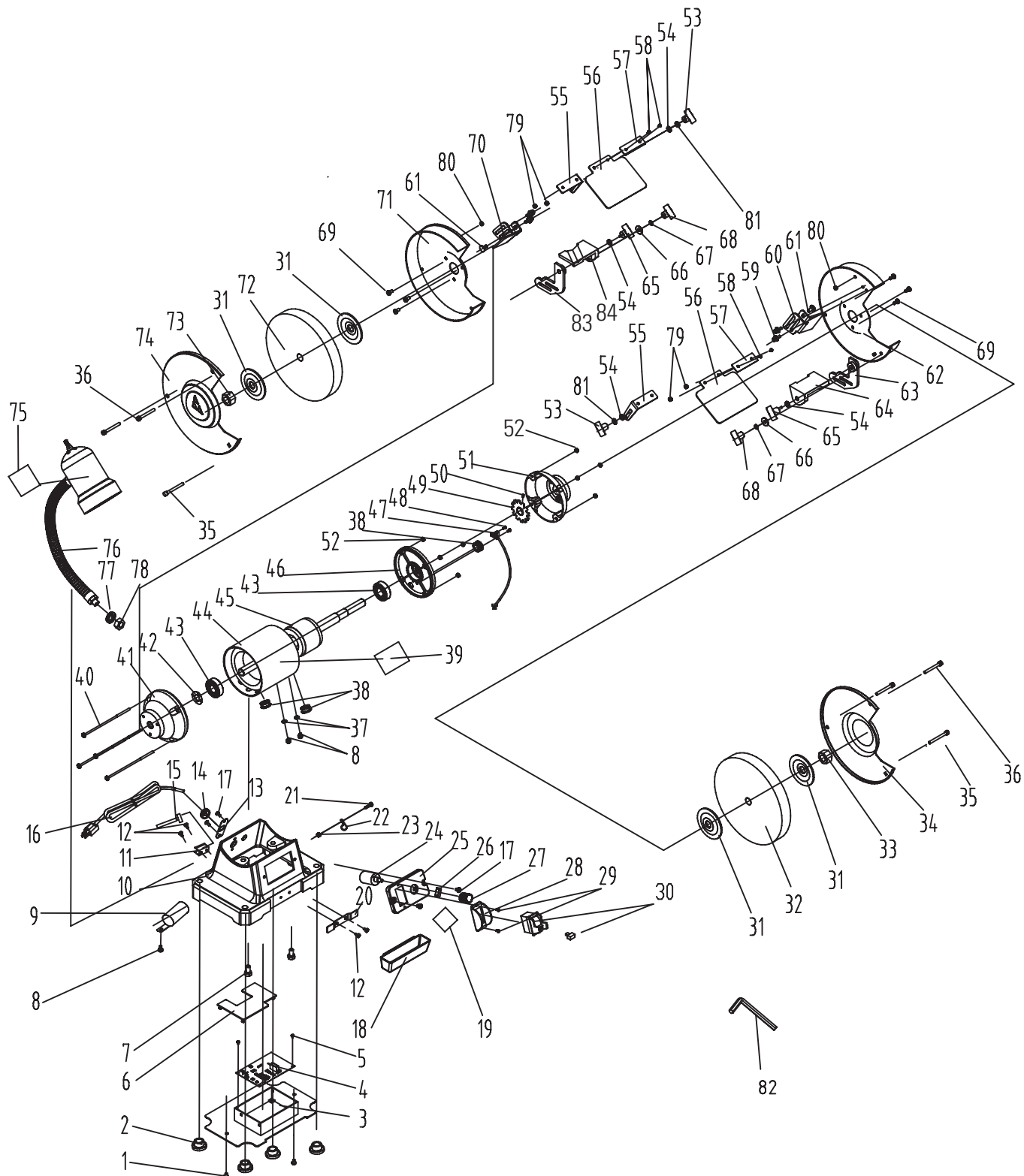
POWER EQUIPMENT CORPORATION

G - 14

PART # DPEC002770
DATE: 09-09-13
REVISION DATE: 02-29-16

23-196

6 - INCH GRINDER



23-196

6 - INCH GRINDER

NO	PART NUMBER	DESCRIPTION	QTY	NO	PART NUMBER	DESCRIPTION	QTY
1	DPEC002781 *	PHILIPS SCR w-FLT WASH (BLK) M4 X 8	2	43	DPEC002869	DEEP GROOVE BALL BEARING #6202	2
2	DPEC002782	RUBBER FOOT	4	44	DPEC002870	STATOR	1
3	DPEC002783	BASE COVER	1	45	DPEC002871	ROTOR	1
4	DPEC002863	PC BOARD (Includes 24, 27, and 47)	1	46	DPEC002872	RIGHT END CAP	1
5	DPEC002785 *	PHILIPS SCREW ST 2.9 X 5	2	47	DPEC002873	SENSOR	1
6	DPEC002786	PC BOARD COVER	1	48	DPEC002828 *	PHILIPS SCREW M2.5 X 6	2
7	DPEC003746	PHIL SCR W-SPR & FLT WASH M6 X 18	2	49	DPEC002829	PLATE	1
8	DPEC002788	PHIL SCR W-SPG & FLT WASH M4 X 8	3	50	DPEC002830 *	INNER HEX HEAD SCREW M5 X 6	1
9	DPEC002789	CAPACITOR 30µf / 300V	1	51	DPEC002874	RIGHT SAFETY END CAP	1
10	DPEC002790	BASE	1	52	DPEC002875 *	HEX NUT M4	8
11	DPEC002791	WHEEL DRESSING CLIP	1	53	DPEC002833	SPL LOCK NUT M6	2
12	DPEC002792 *	PHILIPS SCREW M4 X 8	4	54	DPEC002834 *	FLAT WASHER D6	2
13	DPEC002793	CORD CLIP FIXING PLATE	1	55	DPEC002835	EYESHIELD MOUNTING ROD	2
14	DPEC002794	CORD CLIP	1	56	DPEC002836	EYESHIELD	2
15	DPEC002795	WHEEL DRESSING TOOL	1	57	DPEC002837	EYESHIELD FIX PLATE	2
16	DPEC002796	CORD & PLUG	1	58	DPEC002838	PHILIPS SCREW M4 X 12	4
17	DPEC002797 *	PHILIPS SCREW M5 X 8	4	59	DPEC002839	HEX BOLT w-SPR &/FLT WASH (BLK) M5 X 10	4
18	DPEC002798	COOLANT TRAY	1	60	DPEC002840	RIGHT SPARK DEFLECTOR	1
19	DPEC002799	VARIABLE SPEED LABEL	1	61	DPEC002841	SMALL CARRIAGE BOLT M6 X 12	2
20	DPEC002800	COOLANT TRAY CLIP	1	62	DPEC002876	RIGHT SAFTY GUARD	1
21	DPEC002801 *	PHILIPS SCREW M4 X 16	1	63	DPEC002843	RIGHT FIXED WORK REST	1
22	DPEC002802	WIRE FIX RING	1	64	DPEC002844	RIGHT MOVABLE WORK REST	1
23	DPEC002803 *	FLANGE HEX NUT M4	1	65	DPEC002845	LOCKING KNOB M5 X 17	2
24	DPEC002864	SPEED CONTROLLER	1	66	DPEC002846	BIG FLAT WASHER D5	2
25	DPEC002805	SWITCH PLATE	1	67	DPEC002847	TOOTHED LOCK WASHER D5	2
26	DPEC002806	RUB COVER	1	68	DPEC002848	LOCK NUT M5	2
27	DPEC002807	SPEED CONTROL KNOB	1	69	DPEC002849 *	PHIL SCR ANDSPR WASHER M5 X 10	6
28	DPEC002808	SWITCH GUARD	1	70	DPEC002850	LEFT SPARK SHIELD	1
29	DPEC002809 *	PHILIPS SCREW M3 X 10	2	71	DPEC002851	LEFT SAFTY GUARD	1
30	DPEC002810	SWITCH	1	72	DPEC002877	WHEEL #60 GRIT	1
31	DPEC004310	FLANGE	4	73	DPEC002878	HEX NUT M12 LEFT HAND THREAD	1
32	DPEC002865	WHEEL #36 GRIT	1	74	DPEC002879	LEFT SAFTY GUARD COVER	1
33	DPEC002866	HEX NUT M12	1	75	DPEC002855	LAMP LABEL	1
34	DPEC002867	RIGHT SAFTY GUARD COVER	1	76	DPEC002856	LAMP (Includes 77 and 78)	1
35	DPEC002815	CARRIAGE BOLT M5 X 51	2	77	DPEC002857 *	FLAT WASHER (BLACK) D12	1
36	DPEC002816	PHIL SCR w-FLAT WASH (BLK) M5 X 48	4	78	DPEC002858 *	HEX THIN NUT M12	1
37	DPEC002817 *	TOOTHED LOCK WASHER D4	2	79	DPEC002859	FLANGE HEX NUT (BLACK) M4	4
38	DPEC002818	CORD BUSHING	3	80	DPEC002860	FLANGE HEX NUT (BLACK) D5	4
39	DPEC002746	DATA LABEL	1	81	DPEC002861	SPRING WASHER (BLACK) D6	2
40	DPEC002820	PHILIPS SCREW /FLAT WASHER M4 X 135	4	82	DPEC002862 *	HEX WRENCH S=4	1
41	DPEC002868	LEFT END CAP	1	83	DPEC003736	LEFT FIXED WORK REST	1
42	DPEC002822	WAVE SPRING WASHER D35	1	84	DPEC003737	LEFT MOVABLE WORK REST	1

* = Item is standard hardware that can be purchased from local hardware or home improvement store